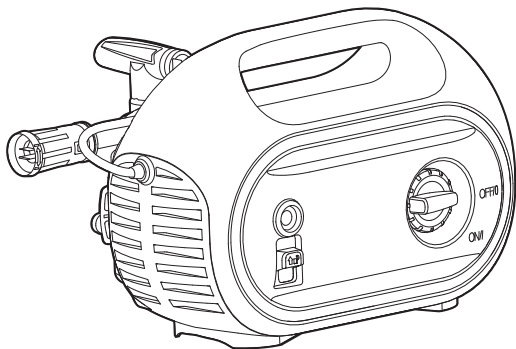


**deli**

# User Manual

High Pressure Washer

DL882201

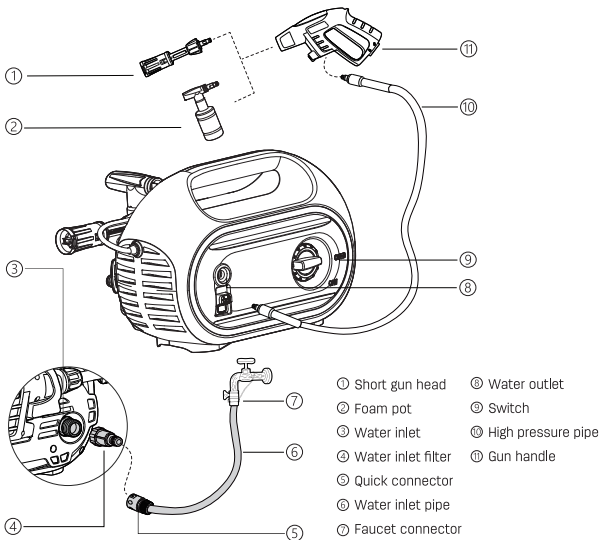


## Precautions:

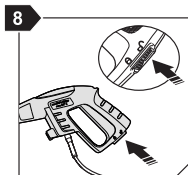
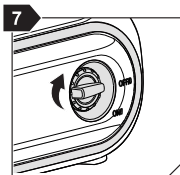
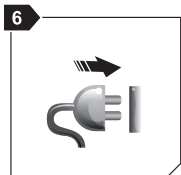
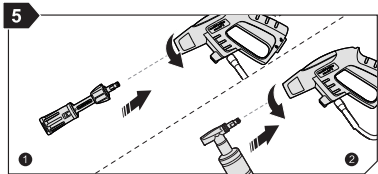
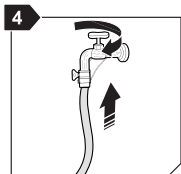
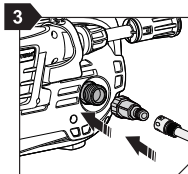
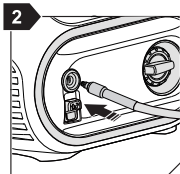
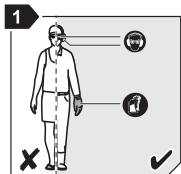
Warning! Please do not use this appliance without reading the instruction manual.

Please read this instruction manual carefully before use to learn the usage method and operation standard of this machine.

## I Product Introduction



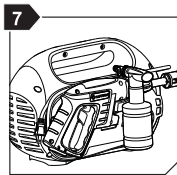
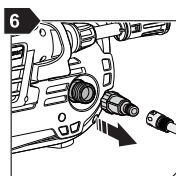
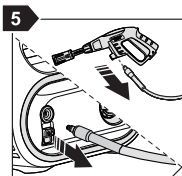
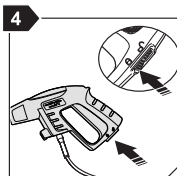
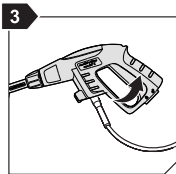
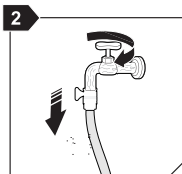
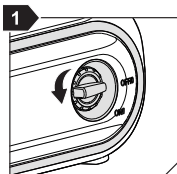
## II Operation Steps



1. Wear goggles, ear protectors, protective gown and shoes with non-slip soles during operation.
2. Connect high pressure pipe to water outlet.
3. Connect water inlet pipe, water inlet filter and water inlet.
4. Connect the water inlet pipe to the faucet connector and then to the faucet.

5. ① Connect gun handle to short gun head.  
② Connect gun handle to foam pot.
6. Connect power supply.
7. Turn on switch.
8. Release latch and press trigger.

### III Removal & Storage

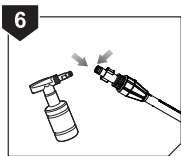
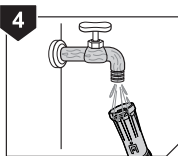
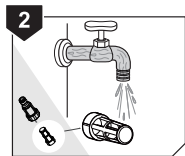
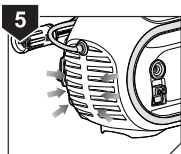
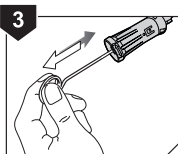
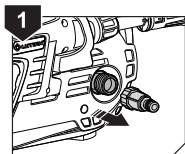


1. Turn off switch
2. Turn off faucet to cut off water supply
3. Press trigger to release residual water
4. Lock the safety latch
5. Dismount high pressure pipes at both ends respectively
6. Dismount water inlet pipe at the water inlet
7. Accessory Storage



## IV Maintenance

---



1. Dismount water inlet filter connector
2. Wash water inlet filter screen
3. Clean nozzle with a cleaning pin
4. Wash nozzle and gun rod
5. Keep vent clean
6. Apply lubricating oil to the joint

## V Technical Parameters

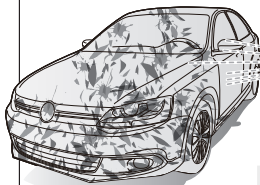
---

Product name: High pressure washer  
Voltage/frequency: 220V-240V~50/60Hz  
no.:28000r/min  
Rated pressure: 75bar  
Rated flow: 5L/min  
Maximum water inlet pressure: 7bar  
Maximum water inlettemperature: 40°C

Item No.: DL882201  
Power: 1400W  
Max. pressure: 100bar  
Waterproof Rating: IPX5  
Maximum flow: 8L/min

## VI Car Washing Steps

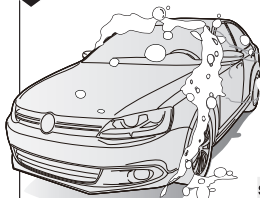
1



### Step 1 Wet car body (2-3 minutes)

Turn on the washer, wet car body with water gun, and prepare to spray foam in the next step.

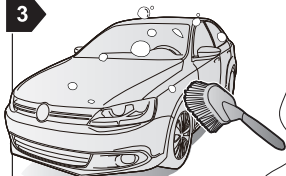
2



### Step 2 Spray foam (3-5 minutes)

Change into the prepared foam pot, and spray car body.

3



### Step 3 Scrub car body (3-5 minutes)

Scrub car body with a brush to eliminate stubborn stains.

4



### Step 4 Clean favorite car (1-2 minutes)

Rinse with clean water and dry with a towel. Your favorite car will shine as new.

## VII Precautions

---

### 1. Symbols for mark description

All pictograms pertaining to high pressure car washer and its parts are illustrated and described herein.

 **Danger:**

Follow safety instructions marked with this symbol to prevent serious personal injury or property damage.





 **Note:**

Please note the risks of damaging machine or its individual parts.

 **Hint:**

This symbol gives hint and instructions, so as to simplify work and ensure safe operation of high pressure washer.

### 2. Safety precaution measures & work methods

- Machine-generated high water pressure and power connection are especially dangerous.
-  • Please do not operate the machine by personnel who are not trained for machine use or have not read this instruction manual.
-  • Minors are forbidden to use the machine.
-  • Before starting the machine, please carefully check for any hidden failure. The insulation layer of cables shall keep intact without any damage.
- Operators and all personnel near the washing position shall take protective measures to avoid hitting by splashes arising from the operation process.
-  • Make sure to unplug from power when cleaning, repairing or replacing parts.
- Comply with national safety regulations promulgated by employer liability insurance associations, social security agencies, occupational safety and health authorities or other organizations.



### 3. Accessories & spare parts

- To ensure machine safety, use only original Deli spare parts or those permitted by Deli.
- High pressure pipes, pipe fittings and connectors are vitally important to machine safety.


### 4. Physical, sensory or mental state

This machine shall only be operated by personnel in good physical and mental state.

### 5. Application

-  • This machine is developed for home use, such as: cars, motorcycles, boats, travel trailers, trailers, terraces, driveways, stone paths, woodworks, brickworks, garden furniture, lawn mowers, etc.
-  • All other purposes fall in the scope of improper use. Deli is not liable for any damage caused by such purposes. The user shall bear the risks of such purposes alone.
- Proper use also includes correct operation, repair and fixing as specified herein.

### 6. Apparel & equipment

-  • Make sure to protect yourself when operating the machine. Wear shoes with non-slip soles. Wear goggles, earprotectors and protective gown during operation. (Such as Operation Steps Figure 1)



Non-slip shoes



Facial mask



Goggles



Protective gown



Ear protectors



Protective gloves

## 7. Detergent

- The detergent must be provided or recommended by Deli.

## 8. Machine inspection before starting work

 **Danger:**

Please do not use the machine if its power cords or important parts such as safety equipment, high pressure pipe and gun handle accessories are damaged.

- Gun handle trigger must be able to move easily and automatically return to its starting position when released.
- Always keep high pressure pipe and gun handle accessories in good conditions (clean, easy to move) and assembled correctly.

## 9. Electrical connection




- The voltage and frequency of machine (see nameplate) must conform to the voltage and frequency of power supply.
- Only a certified electrician may connect the machine to electrical device.
- Power supply of the machine is recommended to install with a leakage protector. If the grounded leakage current exceeds 30mA or 30ms, this device will cut off power supply.
- When using extension cords, note safety hazards such as waterproofing, electric leakage, etc. The specification of extension cords must suit product power requirements.

## VII Precautions & Repair Warranty

---

### 1. Water connection

- High pressure washer is not suitable for connecting with drinking water pipe. 
- This machine is allowed to connect with drinking water pipe only when an appropriate backflow prevention device is installed.
- Use only water free of any impurities. If there is quicksand risk in the water of water inlet (i.e. from your own well), an add-on filter shall be installed.

### 2. Work period

 **Danger:**

Prohibit from using this car washer in the place with explosion danger.

 **Prohibit:**

Prohibit from washing surfaces containing asbestos in high pressure mode.

 **Prohibit:**

Prohibit from inhaling liquids containing solvents (e.g. gasoline, fuel oil, paint diluent or acetone).

 **Prohibit:**

Prohibit from pointing the sprinkler at yourself, others, pets or other animals, or even clean clothes or shoes with injury risks.  
Prohibit from pointing the sprinkler at live equipment or the machine per se with short circuit risks.



 Warning:

Warning! Improper use of appliance will cause danger. Do not shoot water at people, live electrical equipment or appliance per se.

- Firmly hold the gun assembly with both hands. In operation, gun assembly is subject to certain reverse thrust.

 Prohibit:

This high pressure car washer is strictly forbidden to use at a temperature below 0°C.

 Note:

Please do not start a frozen machine.  
Frost damage is beyond warranty!

### 3. Maintenance & repair

- Make sure to unplug power from the socket before maintenance, cleaning and repair.
- Make sure to repair at Deli's authorized service sites and using original Deli spare parts.
- If the machine cannot start or stop, or has circumstances such as machine vibration, pressure fluctuation, motor sound and no water, turn off power immediately and refer to the troubleshooting table in the instructions, or contact your local dealer.
- The customer is prohibited to repair by changing original structure of product or connection approach of power cords.

### 4. High pressure car washer recycle

- Stop using old car washer immediately.
- Unplug power of the machine.
- Cut off cable.
- Please do not throw away electrical equipment with household garbage.

## 5. Warranty conditions

- Deli promises 1-year warranty for the household high pressure washer.
- Deli will provide warranty in the following circumstances:
  - Failures are caused by material, process defect or design flaw (wear and misuse excluded from the repair).
  - Instructions in the instruction manual are entirely followed.
  - No repair is made or attempted by others except repair personnel trained by Deli.
  - Only original accessories are used.
  - The product has no abused circumstances such as knocking, collision or freezing.
  - Only water free of any impurities is used.
  - High pressure washer is not used for rental and any other form of commercial purposes.
- Warranty scope covers replacement of defective parts, excluding package and postage/freight.
- The machine shall be sent to Deli or Deli's authorized repair center, along with failure description and product specifications
- Invoices will be issued to the repair beyond warranty conditions. (i.e. failures caused by the reasons mentioned in troubleshooting table section of the instruction manual).

## VIII High Pressure Washer Operation

---

### 1. Accessory installation

- Always install water inlet filter screen to filter out sand, lime and other impurities, because these substances will damage pump valve.
- When installing water inlet nut for the first time, check whether water inlet filter screen installed by the factory is mounted in water inlet nut of the machine. Turn and tighten water inlet nut clockwise to the water inlet.



## **2. High pressure water pipe connection**

- Align high pressure water pipe with the gun handle valve sleeve and press it inward forcibly to complete the connection.
- Align high pressure water pipe with water outlet of the machine and insert it into water outlet. If you hear a clicking sound, it is locked tightly.

## **3. Gun assembly installation**

- Push gun head (or cleaning pot) into gun handle, first press down insertion piece to the bottom forcibly and then rotate 90° to the left until parts are completely gripped without falling off.
- If using cleaning pot, push the cleaning pot assembly into gun handle, put cleaning fluid into cleaning pot, and use cleaning fluid to rinse the dirt.

## **4. Water connection**

### **— Connection to lower pressure water source**

- The machine also enables operation in self-suction mode, indicating the machine can be connected to water containers, rivers, lakes and pools, etc. When the water is diverted from main pipeline of non-drinking water, backflow preventer is not required.
- When operating the machine connected to lower pressure water source, make sure to use an add-on filter device to guarantee impurities not sucked in.
- To meet these requirements, it is recommended to use the original water inlet pipe kit.
- Use new hose assembly attached with the appliance, and old hose assembly cannot be used repeatedly.
- The machine is designed for suction up to 50cm above horizontal plane.
- Place the machine at a maximum height of 0.5 meters above horizontal plane.
- Ensure water inlet filter screen put in place, connect to water inlet pipe, and ensure it tightly connected to water inlet.
- Start the machine, and turn the switch to ON/I.

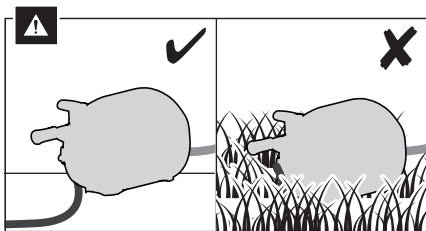
- Wait until steady water flow discharged from water outlet.
- Turn off the machine and connect high pressure water pipe and gun assembly.

### — Connection to pressurized water source

- Maximum pressure of water inlet is 0.7MPa/7bar, and maximum temperature is 40°C (see nameplate)
  - Check whether the filter is installed in water inlet pipe and unclogged.
- ☹ — Connect water pipe to the faucet with quick connector. Turn on water source.
- Before connecting water pipe to the machine, first allow water to flow through water pipe, so as to prevent sand and dirt from entering the machine.
  - Turn off water source, and connect water pipe to water inlet with quick connector.

## 5. Start high pressure washer

- Before the cleaning work, check whether the machine is in an upright position and on a flat surface. Please do not place the machine in tall grass!



- Connect to power. Machine voltage and frequency (see nameplate) must conform to power supply voltage and frequency.
- Insert power plug into power socket.
- Turn on water source.
- Release the trigger lock. When the high pressure washer is unattended, remember to unplug, turn off high pressure washer, and then lock the trigger.
- Touch the injector handle trigger, and allow water to flow out until no air in water pipe.
- Start the machine, and turn the switch to ON/I.
- Touch the trigger of gun handle. The machine stops automatically, when gun handle trigger is released. The machine starts again, when gun handle trigger is touched again. Prohibit from turning on and off the gun quickly, and after turning off the gun, pause for a few seconds before turning it on to use.

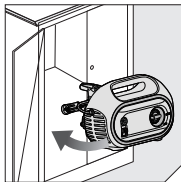
Please neither cover vent hole of the machine when using, nor run the machine idle without connection to water source, as it will cause damage to the machine.

Power connection shall be completed by an eligible electrician and comply with IEC60364.

## IX After Using High Pressure Washer

---

- Store high pressure washer inside a frost-free room! If the machine freezes due to mistake, it is necessary to check the machine for damage.



## Stop high pressure washer

- Cut off water supply, touch gun handle trigger, and run the machine until water no longer flows out of the nozzle.
- Stop the machine, and turn the switch to OFF/O.
- Unplug machine from power socket, and put away power cords.
- Remove quick connector at the water inlet nut to dismount water inlet pipe.
- Press gun valve sleeve button to dismount high pressure pipe.
- Rotate high pressure pipe at water outlet counterclockwise, and dismount high pressure pipe.
- Place gun assembly, cleaning pot assembly and other accessories in the bracket of high pressure washer.
- Make sure to drain away residual water in water pump, water inlet pipe and accessories after using and before storing the machine.

## **XI Maintenance**

---

- To ensure long service life and no failure of high pressure washer, please take the following suggestions:

Before installation, clean water inlet pipe, high pressure pipe, gun handle and accessories.

Wash dust and sand of the connector, rinse cleaning pot and cleaning pot nozzle, wash gun handle nozzle, and keep the water inlet filter screen clean and unobstructed.

### **1. Water inlet filter cleaning**

- Regularly wash the water inlet filter screen at least once a month or more frequently, depending on use circumstances.
- Carefully loosen water inlet filter screen using a screwdriver (needle nose pliers) and wash it.  
Before reinstallation, check water inlet filter screen for damage.

## 2. Nozzle cleaning

- A clogged nozzle will cause high pump pressure.
- Use only nozzle cleaning tool (cleaning pin) when the nozzle is detached and the machine is stopped.
- Disconnect gun rod, and backflush the nozzle with water.

## 3. Machine vent cleaning


- Keep the machine clean, so that cool air can pass through machine vent freely.

## 4. O-ring lubrication

- To ensure easy connection and prevent O-ring from drying out, lubricate various connectors on a regular basis.

## XII Warning

---

 • Warning! This appliance is designated to use together with the detergent provided or recommended by the manufacturer. The use of other detergents or chemical products may adversely affect safety of the appliance.

 • Warning! Unless the personnel wear protective gowns, otherwise do not use this appliance within the range of their activities.




• Do not spray water on yourself or others for the purpose of washing clothes, shoes and socks.

• Cut off power before performing user maintenance.

• Children or untrained personnel shall not use high pressure cleaner and steam cleaner.

• To ensure safety of the appliance, use only original accessories provided or recognized by the manufacturer.

 • Warning! High pressure hose and pipe connector are imperative to safety of the appliance.

• Use only hose and pipe connector recommended by the manufacturer.



• Do not use this appliance, if its power cords or important parts are damaged, such as safety device, high pressure hose, spray gun, etc.

If extension cords are used, the plug and socket must have waterproof structure.

- ⚠ • Warning! The use of improper extension cords may cause danger.
- Regarding the fixed appliances intended for use in dry separate rooms and steam cleaners intended for outdoor use only, installation instruction manual shall include the following precautions: "Do not splash wet or rinse".
- If power cords are damaged, in order to avoid danger, the replacement must be conducted by professionals from the manufacturer, its repair department or similar departments.

### XIII Troubleshooting

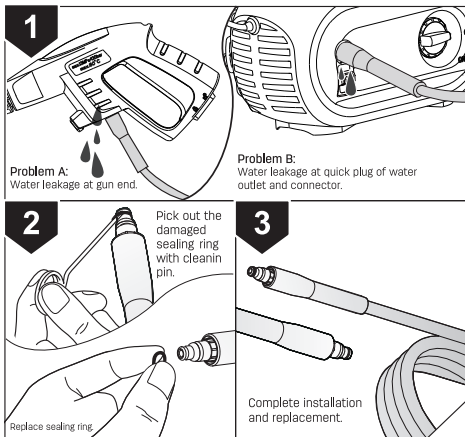
To avoid unnecessary losses, carefully read the table below before contacting Deli car washer repair agency.

Symptoms	Reasons	Suggested Measures
Machine cannot start	Machine unconnected to power Socket failure Fuse blown Extension cable failure	Plug machine into power or change a socket. Change a socket. Replace fuse, and turn off other machines. Try not using extension cable.
Fluctuation pressure	Air sucked in pump Foreign objects, clogging or jamming inside the pump Pump sealing ring worn	Check whether high pressure pipe joint is sealed. Promptly contact after-sales service center. Promptly contact after-sales service center.
Machine stopped	Fuse blown Power supply voltage error Thermo-sensitive protection assembly activated Nozzle part clogged	Replace fuse, and turn off other machines. Check whether power supply voltage is consistent with specifications on model label. Cool down car washer for 5 minutes. Clean the nozzle.
Fuse blown	Too thin fuse	Install the fuse with greater current strength. Try not using extension cable.
Machine vibrates	Air in water inlet pipe/pump Insufficient water supply in main pipeline Water clogged in nozzle part Filter clogged Water inlet pipe tangled up	Allow the machine to run with the trigger open until normal working pressure is restored. Check whether water supply meets the required specifications (see nameplate), and avoid using long and thin water inlet pipe. Clean the nozzle. Clean filter screen. Straighten water inlet pipe.

Machine often starts and stops on its own	Pump/gun rod and gun handle water leakage	Promptly contact after-sales service center.
Machine starts but no water out	Pump, pipe accessories frozen No water supply Filter clogged Nozzle clogged	or Wait for the pump, pipe or accessories to thaw. Connect to inlet water. Clean filter screen. Clean the nozzle.

We reserve the right to modify all contents (including accessories) herein.

## XIV High Pressure Pipe Sealing Ring Replacement Diagram



Note: As a vulnerable part, sealing ring of high pressure pipe may be damaged or leak water after long-term use, and must be replaced.