

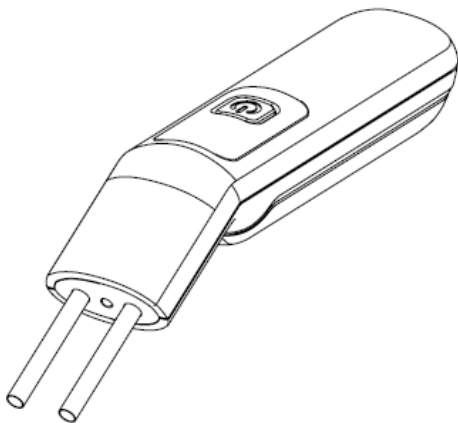
**deli**

# Cordless Welding Kit

User Manual and Safety Instructions

DY812

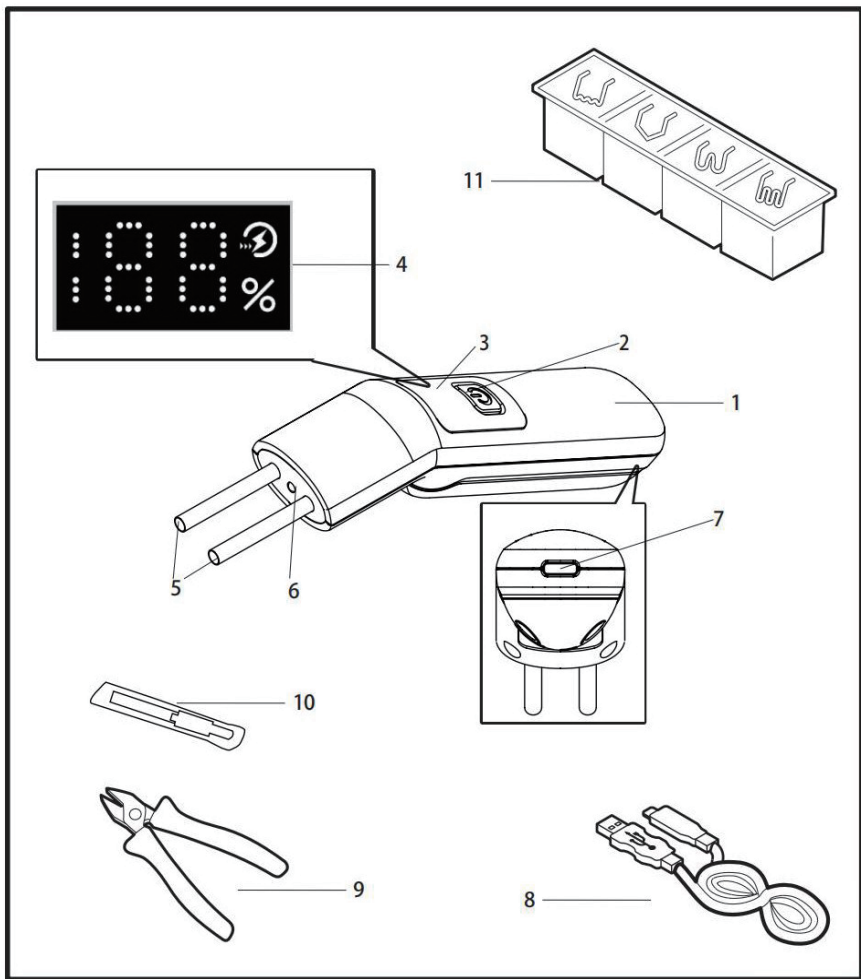
DY812-X



**WARNING**



To reduce the risk of injury, user must read and understand operator's manual. Save this manual.



## 1. Safety Information



Read the accompanying safety warnings, additional safety warnings, and instructions. Failure to follow safety warnings and instructions may result in electric shock, fire and/or serious injury. Save security warnings and instructions for future reference.

The following symbols are used on the user manual or product	
	Read the user manual.
	Failure to follow the instructions in this manual may result in personal injury, loss of life, or tool damage.
	Voltage and shock warning.
	Class III appliance.
	Note: High temperature on surface, easy to be burned.
	Wear safety goggles.
	Don't throw the battery into fire.
	Don't throw battery into water.
	Don't place machine in the unsuitable containers.
	Lithium-ion batteries are required special sorting and collection.
	The product complies with the safety standards applicable of the European Directive.

### General Safety Warnings



#### Warning!

Read all safety warnings and instructions. Failure to comply with warnings and instructions may result in electrocution, fire and/or serious injury

Save all warnings and instructions for future reference.





## 1. Use and Maintenance for tools with battery

- a. Batteries must be charged by the charger specified of manufacturer. Non-designated chargers may pose a fire risk.
- b. This tool should only be used with specially designated battery packs. Using any other battery pack may pose a personal injury and fire risk.
- c. When the battery pack is not in use, keep it away from other metal objects such as paper clips, coins, keys, nails, screws, or other small metal objects that can connect one terminal to another. Short-connecting battery' terminals may cause burns or fire.
- d. Under harsh conditions, liquid may eject from the battery; You need to avoid contact with this liquids. In case of accidental contact, rinse liquid with water. If fluids come into contact with your eyes, seek additional medical help. The liquid ejected from the battery may cause irritation or burns.
- e. Do not use damaged or modified battery packs or tools. Damaged or modified storage batteries may exhibit unpredictable results, which may result in the risk of fire, explosion or injury.
- f. Do not expose the battery and tool to fire or high temperature. Exposure to fire or temperatures above 130 °C may cause an explosion. Note: The temperature "130 °C" can be replaced by the temperature "265 °F".
- g. Follow all charging instructions and do not charge a battery pack or tool out of the temperature range specified in the instructions. Improper charging or temperatures out of the specified range may damage the battery and increase the risk of fire.

## 2. Service

- a. Only qualified maintenance person are allowed to use the right parts to repair power tools. This will ensure the safety of power tools.
- b. Do not repair the damaged battery string. Battery packs can only be repaired by the manufacturer or authorized service provider.
- c. The integrated battery can only be removed by professionals.

### **Special safety instructions for plastic welding machine**

	Fire danger! When hold the welding machine ,make ensure its hot part does not touch any flammable materials. Do not leave the machine unattended when it is heated. Let it be cool before storage.
	The temperature of heated nails is about 600°C. Touch the nails will result in serious burns.
	Because of the potential fire hazard. This machien must always be placed on a non-combustible surface when it is not in use.
	Warning! When not be in use, machine must be properly stored.

- Children over 8 years of age , persons with reduced physical, sensory or mental abilities ,persons who are lack of experience and knowledge may use the machine, but must under the supervision and guidance of a professional and fully aware of the dangers of the machine.
- Children are not allowed to use this machine alone.
- Children are not allowed to clean and maintain the product without supervision.

- Harmful fumes are generated during welding. Ensure good ventilation or proper exhaust.
- When using the machine, it is necessary to wear goggles to protect the eyes, wear suitable work clothes to protect the body, and prevent solder splashes and corrosive fumes.
- The machine must not be used to heat liquids or plastics.
- Do not leave the device unattended when it is turned on.
- Only market-qualified chargers can be used to charge this machine
- Do not point the nails of the plastic welding machine directly at people and animals.
- Do not use this machine near combustible materials or flammable gases.
- When the welding machine is in use or just after use, do not touch the nails. Handle of welding machine must be kept dry.
- The welding machine should be completely cooled before storage

## 2. PRODUCT INFORMATION

### Usage

This Dc cordless welding machine is mainly used to repair plastic products. Use the welding nails to repair the horizontal, vertical, and other kind's cracks.

### Technical Parameters

Rated Voltage	4V DC Li-ion
Capacity of battery	2000mAh
Preheating time	3 seconds
Charging time	Approx 2h
Temperature	600°C (Max)

## Product Description

1. Housing of machine
2. Switch
3. LED working indicator
4. Battery indicator light
5. Heating support bracket
6. LED lighting lamp
7. Charging port
8. USB C cable
9. Metal plier
10. Utility knife
11. Welding nails

## **3. Installation of components**

### **Install/replace the welding nails**



**Before initial use, welding nails must be installed on the heating bracket**



**Make sure the welding machine heating switch is off.**

- **Install the welding nails:** Hold the welding machine's handle and insert the welding nails into the holes in the front end of bracket•
- **Replace the welding nails:** Make sure the heating switch of machine is turned off, pull the welding nails with metal pliers, be careful not to get burned. Then insert a new welding nail into the holes in the front of bracket.

## **4. Operation**



**The battery must be charged before first use.**

### **Charging of the machine**



**The machine cannot be used while charging**

- Plug the charging cable (USB end) into the adapter (not included)..
- Plug the charging cable(Type C end ) into the machine.
- Plug the charger plug into the power outlet, and the LED indicator of the machine will light up and show the charging status. •

Note: It is also possible to charge the machine by connecting the charging cable to a suitable USB socket (5V).

## Products turn on and off



Be careful, there's a risk of burns! Do not touch hot heating brackets and welding nails

### Start work:

1. Take the welding machine out of the package.
2. Hold the welding machine in your hand.
3. Insert the welding nail into the front holes of the heating bracket.
4. Press the power switch , the front-end lighting LED (white light) lights up, and the machine starts.
5. Hold the handle of the welding machine, press the nail against the crack to be welded.
6. Loosen the switch when the nail is submerged 1 mm into the welding surface.
7. Remove the welding machine from the welding place after the welding place is cooled, Leave the nail in the welding place, cut off the exposed part of the nail with metal plier
8. Want to continue to use the welding machine, please repeat step 2 to 7.

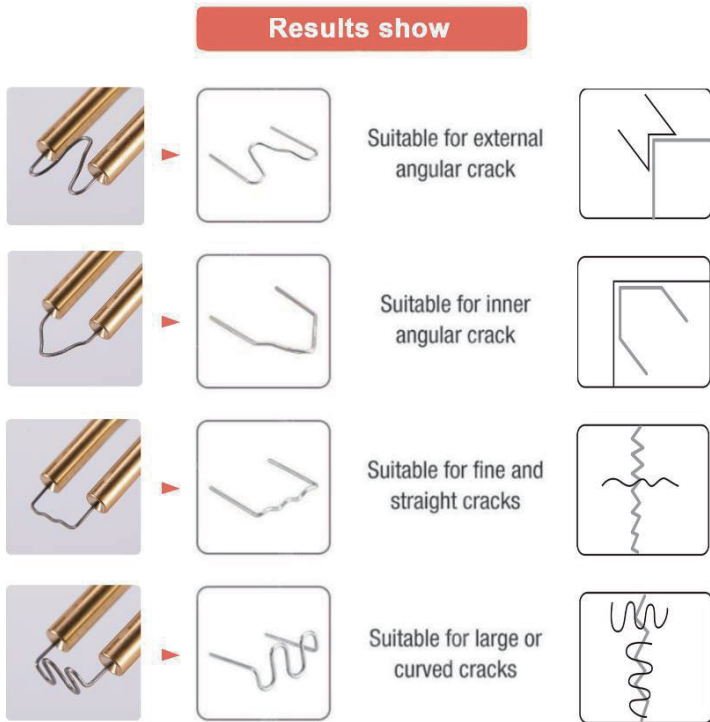
### Finish work:

- Turn off the machine by pressing the power switch. Make sure the “Heating support bracket” and nails do not touch anything until they are cooled.
- Wait for the welding machine to cool down and put it in the storage box.

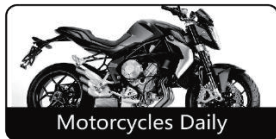
### Operation Guide

- To obtain a perfect weld joint, the weld must be completely clean and grease-free.
- Before welding, if possible, establish a mechanical fixation between the plastics to be connected ,which will keep the parts not slipped. In this way, you will obtain stable welding points and avoid damage to the welded parts caused by external forces.
- Do not pull out the welding machine before the welding place is completely cooled, Not enough cooling time will make nails loose from the welded part.
- When welding, do not continue to hold down the heating switch after the welding nail and the plastic come into contact to prevent excessive heating from causing welding failure.
- Place the welding machine on a heat-resistant surface during work.
- After the work is finished, it should be stored until the welding machine has cooled Down.

## 5. Selection of welding nails



## 6. Wide usage





- 

## 7. Maintenance

Only leave the machine to be serviced by a qualified electrician or repair point!

- The machine is designed to keep the machine running for a long time with minimal maintenance. Proper maintenance and regular cleaning of the machine can make you get better welding results.

### **clean**

- Do not wipe the machine with solvents such as gasoline, alcohol, ammonia, etc. These solvents can damage plastic parts.
- Do not spray the machine with water or immerse the machine in water. Water can cause electric shock and short circuit hazards!
- Do not use detergents or solvents. Failure to do so may cause irreparable damage to the product

# Product Warranty Card

## Dear users :

Thank you for buying our products. In order to ensure your profit, users who buy our products can contact local distributor or Specified repair stations with invoice and warranty cards if the product failures due to quality problems.

## Warranty Notice:

1. From \_\_\_\_\_ (Year/Month/Day) to \_\_\_\_\_ (Year/Month/Day), If the failure happen in normal use, our company will provide free warranty, parts replacement and other services according to the failure situation.
2. This warranty card and purchase invoice are the voucher of after-sales service provided by our company to customers. The card must be detailed only after filling in the following form and affixing the official seal with the distributor.
3. In one of the following cases, free warranty service will be invalid, and maintenance fees will be required:
  - ( 1 ) Exceed the expiration date.
  - ( 2 ) Failure or damage caused by not following the requirements of the product manual, maintenance or improper storage.
  - ( 3 ) Failure or damage caused by disassembling, repairing or modification of the product without the permission of our company.
  - ( 4 ) Machine breakdown or damage caused by force majeure.
  - ( 5 ) Consumable accessories.

This card is issued with the product. One card for one machine, to ensure that you can fully enjoy the right to free warranty service provided by the company, please keep this card properly, lost will not be replaced.

Purchase Date: \_\_\_\_\_ (Year/Month/Day)

# Product Certificate

Inspector:

01

Date of manufacture:

NINGBO DELI TOOLS CO., LTD.  
No. 128 Chezhan West Road, Huangtan Town,  
Ninghai County, Ningbo, Zhejiang, China  
delitoolsglobal@nbdeli.com  
www.delitoolsglobal.com  
+86 574 87562689  
MADE IN CHINA

